



**BREATHE EASY...Solutions for Clean, Safe Air**

## MISTMAX® MM2400 Specifications and Technical Data

### TYPICAL APPLICATIONS: Source Capture of:

- OIL MIST, SMOKE FROM HIGH SPEED MACHINING CENTERS
- HIGH VOLUME MIST APPLICATIONS OIL OR WATER SOLUBLE, SMOKE



### STANDARD FEATURES:

- 2,400 CFM ACTUAL
- EXTENDED FILTER LIFE
- MISTMAX® PATENTED FILTER TECHNOLOGY COMPETES WITH EUROPEAN TECHNOLOGIES
- 99.98% EFFICIENT WITHOUT ADDITIONAL HEPA FILTERS
- DUAL GAUGES TRACK STATIC PRESSURE ON BOTH THE PRE-FILTER AND PRIMARY FILTER
- FRONT LOAD, EASY FILTER ACCESS
- HIGH CAPACITY DIRECT DRIVE BLOWER
- START / STOP SWITCH STD.

- 2 EA. 14" DIA. INLET COLLARS, LOCATED LEFT, AND RIGHT WITH 2 EA. 14" DIA CAPS
- CAM LOCK POSITIVE FILTER SEAL SYSTEM ENSURES NO BY-PASS

### OPTIONS:

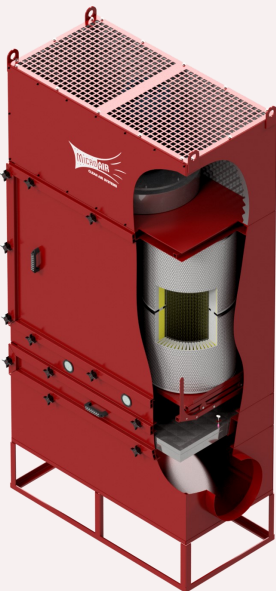
- HEPA AFTER-FILTER
- BAFFLE / MESH PRE-FILTER COMBINATION
- MIST-X (CHEVRON) PRE-FILTER
- FLOOR STAND

### HOW IT WORKS:

The future of oil mist filtration is here with Micro Air's newest development, the patented, extended life, multi-layered **MISTMAX™** oil mist filter. This new technology incorporates Brownian diffusion techniques (smaller particles randomly combine to form larger, more easily removed particles) along with traditional impingement technologies to provide the newest technological advancement in mist filtration.

Depending on the application **MISTMAX™** filters will provide extended filter life in applications such as high-speed machining centers, heat treating, cold drawing, gear cutting etc., operations once deemed too tough for traditional methods of mist collection. Mist laden air flows through the inlet or inlets into the bottom plenum. The air then turns 90 degrees and goes upward through the exclusive Mist-X pre-separation filter where most of the oil is removed. Finally, the air goes through the four 99.98% efficient **MISTMAX™** filters. These special

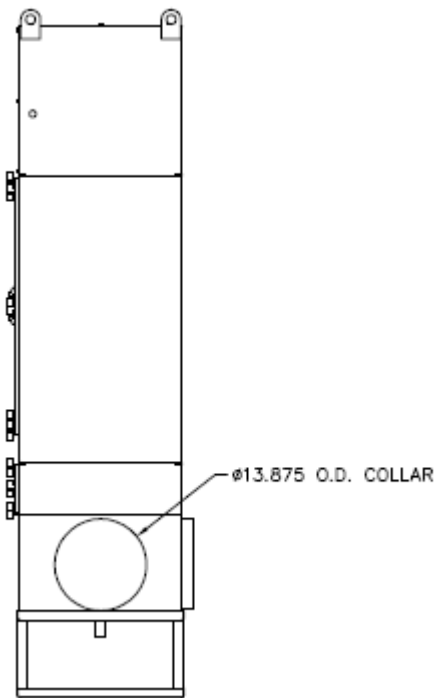
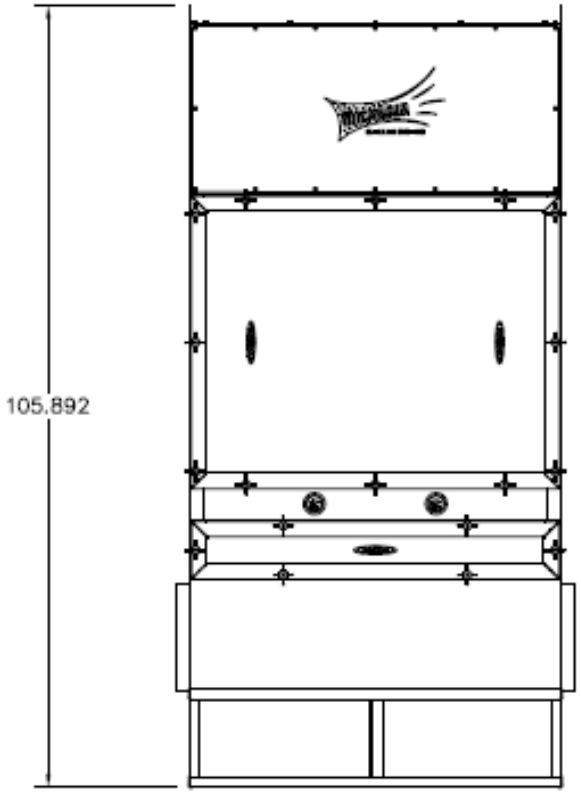
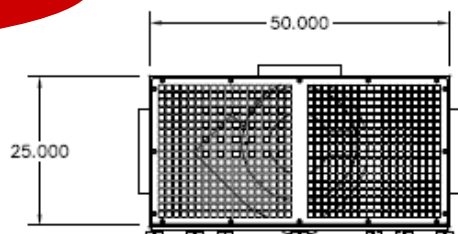
filters remove any remaining mist and smoke. Clean air is then discharged at the top of the unit. Oil, removed from the airstream, drains out the bottom of the plenum.



**MM2400—Ceiling Hung  
Ducted to Hoods over Machining Process**



# MM2400



## MM2400

### MM2400 SPECIFICATIONS:

**OVERALL DIMENSIONS:**

106" H X 50" W X 25" D WITH FLOOR STAND  
 133.5" H X 25 W X 25" D WITH HEPA AFTERFILTER AND FLOOR STAND

**WEIGHT:**

\*1,200 LBS ACTUAL WEIGHT  
 \*1,275 LBS SHIPPING WEIGHT  
 \*WEIGHT VARIES DEPENDING UPON OPTIONS SELECTED

**CABINET:**

HEAVY DUTY 14 GA. WELDED GALFANEAL STEEL W/EXTERIOR SURFACES GROUND SMOOTH

**FINISH:**

INDUSTRIAL GRADE TEXTURED BAKED CRIMSON RED ENAMEL PAINT INSIDE AND OUT

**FILTER ACCESS:**

FRONT LOAD THROUGH DOOR FOR EASY ACCESS

**MOTOR:**

10 HP, TEFC, 208 / 230 OR 460V, 60 HZ, THREE PHASE, SINGLE SPEED

**BLOWER:**

DIRECT DRIVE, HIGH STATIC, BACKWARD INCLINED IMPELLER

**AIR VOLUME:**

2,400 CFM ACTUAL

**PREFILTER:**

HIGH-EFFICIENCY MIST-X (CHEVRON) PRE-FILTER

**STANDARD PRIMARY FILTER:**

EXTENDED LIFE, 99.98% HIGH EFFICIENCY, MULTI-LAYER, MISTMAX® CARTRIDGE STYLE FILTER

**FILTER CHANGE INDICATER:**

DUAL MINIHELIC GAUGES, ONE EA. ON PRE-FILTER AND PRIMARY FILTER

**CONTROLS:**

208-230/460V, 3 PHASE, PREWIRED TO NEMA 4 START /STOP SWITCH

**INLET / EXHAUST:**

INLET—2 EA. 14" DIA. COLLARS WITH 2 EA 14" DIA. CAPS  
 EXHAUST - OUT TOP OF UNIT

**MAX CURRENT**

208—230V / 460V—24.8 / .12.4 AMP

**NOISE LEVELS:**

80 dBA @ 5' -

**OIL DRAIN**

(2) EA 1" NPT PIPE COUPLING (FEMALE)

**MOUNTING:**

12" H. FLOOR STAND

SPECIFICATIONS SUBJECT TO CHANGE WITHOUT NOTICE