



# MICRO AIR TWISTER RP-1

## Specifications and Technical Data

### TYPICAL APPLICATIONS:

- WELD SMOKE AND FUMES
- GRINDING / POLISHING DUST
- MIXING OPERATIONS
- BAG FILLING OPERATIONS
- WOODWORKING OPERATIONS



### STANDARD FEATURES:

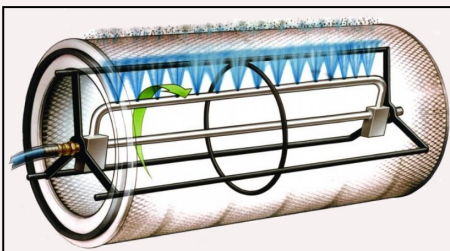
- 1,000 CFM
- SINGLE CARTRIDGE COLLECTOR WITH UNIQUE CYCLONIC DROP-OUT FEATURE
- 72 DBA AT OPERATOR
- 99.999% EFFICIENT FIRE RETARDANT CARTRIDGE FILTER
- ROTO-PULSE® FILTER CLEANING SYSTEM MANUAL PULSE STANDARD
- 6" DIA. TANGENTIAL INLET
- 8" BLAST GATE FOR EASY CLEAN-UP
- 1 1/2 HP, 120 VOLT MOTOR/BLOWER WITH ON/OFF SELECTOR SWITCH

### OPTIONS:

- VARIETY OF CARTRIDGE FILTER OPTIONS
- WALL MOUNT KIT
- FLOOR STAND
- 1 1/2 HP, 220 VOLT MOTOR/BLOWER
- STAINLESS STEEL FOOD GRADE VERSION AVAILABLE
- AUTO-PULSE ROTO-PULSE® CARTRIDGE CLEANING SYSTEM
- MAGNAHELIC GAUGE

### HOW IT WORKS:

Contaminated air is pulled into the tangential inlet on the side of the RP1 Cabinet. Centrifugal force moves the heavy dust to the interior sidewalls and drops it out to the cylindrical hopper at the bottom of the unit. Finer dust particles are captured through the cartridge filter section, where the contaminant is filtered and dropped into the hopper during the cartridge cleaning cycle. Breathe Easy, clean safe air is exhausted out the top of the unit.



ROTO-PULSE®

**Cartridge cleaning** is accomplished with Micro Air's proprietary **Roto-Pulse®** cleaning system, where air is pulsed into a specially designed stainless steel, rotating tube, engineered with pre-drilled holes. As the air enters this tube, the force of the pulse causes the tube to rotate incrementally inside the cartridge. While rotating, air exits the pre-drilled holes, resulting in air dispersement over the entire surface of the cartridge, providing for an improved cartridge cleaning cycle, compared to competitive backflush cleaning systems.

As the air enters this tube, the force of the pulse causes the tube to rotate incrementally inside the cartridge. While rotating, air exits the pre-drilled holes, resulting in air dispersement over the entire surface of the cartridge, providing for an improved cartridge cleaning cycle, compared to competitive backflush cleaning systems.

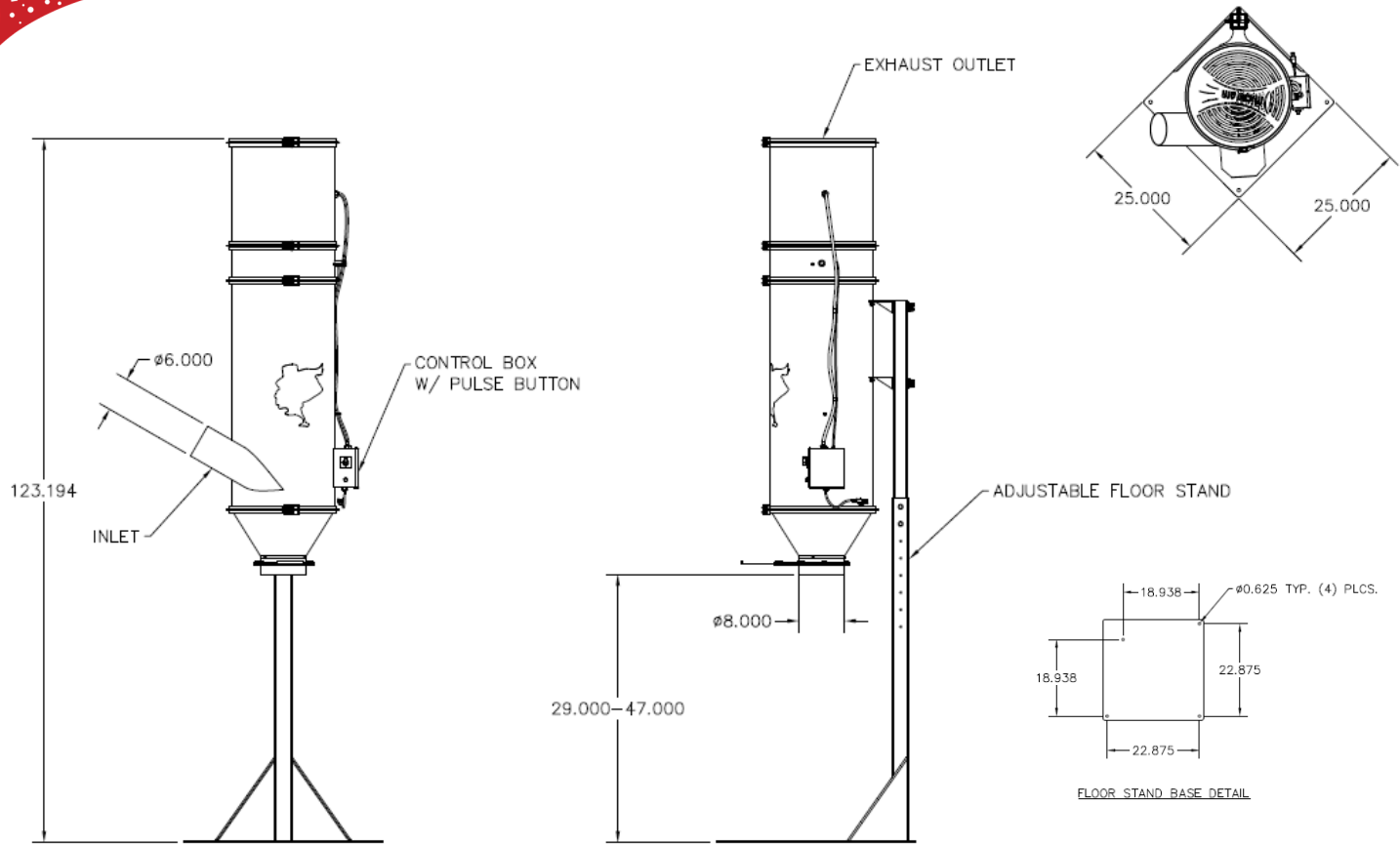


**RP1 Ducted to Weld Stations at Union Training School**

L2458-RP1-10/23



# RP1



## RP1 with Floor Stand

### RP1 SPECIFICATIONS:

**OVERALL DIMENSIONS:**

18" DIA. X 76" H  
18" DIA. X 123" H WITH FLOOR STAND

**WEIGHT:**

\*220 LBS ACTUAL WEIGHT  
\*250 LBS SHIPPING WEIGHT  
\*WEIGHT VARIES DEPENDING ON OPTIONS SELECTED

**CABINET:**

HEAVY DUTY 20 GAUGE GALVANEAL STEEL WITH EXTERIOR SURFACES GROUND SMOOTH

**FINISH:**

INDUSTRIAL GRADE CRIMSON RED, TEXTURED BAKED ENAMEL PAINT IN SIDE AND OUT. OPTIONAL EPOXY COAT INSIDE & OUT AVAILABLE

**FILTER ACCESS:**

THROUGH BOTTOM OF UNIT—SIMPLY REMOVE BOTTOM FLANGE CLAMP FOR ACCESS

**MOTOR**

1 1/2 HP, 120V, 60 Hz, TEFC MOTOR, THERMALLY PROTECTED

**BLOWER:**

HIGH PRESSURE DIRECT DRIVE BLOWER, 3450 RPM

**AIR VOLUME:**

1,000 CFM—CONSULT BLOWER CURVES FOR SPECIFICS

**FILTER CHANGE INDICATOR:**

MAGNEHELIC GAUGE (OPTION)

**FILTRATION:**

- ONE EA. HIGH EFFICIENCY, 80/20 BLEND, FIRE RETARDANT CARTRIDGE WITH 174 SF REDMAX® MEDIA, MERV 11
- TREATED SPUNBOND WASHABLE CARTRIDGE (OPTION)
- NANOMAX® CARTRIDGE WITH 174 SF NANO-FIBER MEDIA (OPTION)

**CONTROLS:**

FRONT, CABINET MOUNTED ON/OFF SWITCH, MANUAL PULSE BUTTON TO ENABLE CARTRIDGE CLEANING CYCLE

**INLET / EXHAUST:**

6" INLET, LOCATED ON SIDE OF UNIT  
EXHAUST - OUT TOP OF UNIT

**MAX CURRENT**

12.4 AMPS

**NOISE LEVELS:**

72 dBA @ 5'

**COLLECTION OPTIONS:**

DUST TRAY WITH SHORT LEGS / HOPPER WITH LONG LEGS

**COMPRESSED AIR:**

REQUIRES 80—90 PSI CLEAN, DRY AIR & MINIMUM 3/4" AIR LINE

**CARTRIDGE CLEANING SYSTEM:**

ROTO-PULSE® ROTATING TUBE WITH PRE-DRILLED HOLES. AS AIR IS PULSED INTO THE TUBE, IT ROTATES AND AIR EXITS THE PRE-DRILLED HOLES, PROVIDING A HIGHLY EFFICIENT AND TOTAL CLEANING OF THE CARTRIDGE FILTER