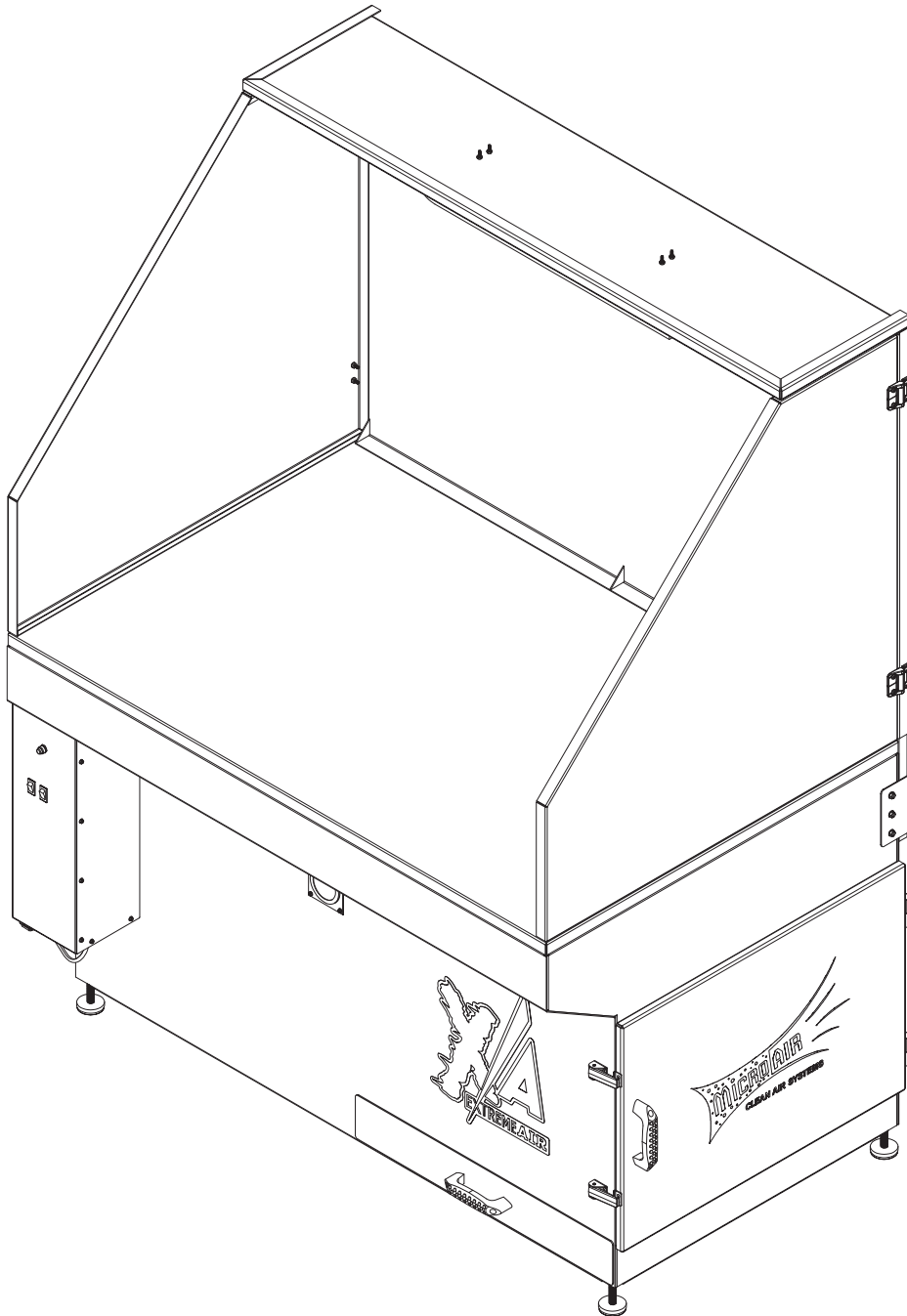




# XA34 Max

## Installation and Operation Manual



### **Important:**

This manual contains specific cautionary statements relative to worker safety. Read this manual thoroughly and follow as directed. It is impossible to list all the hazards of dust control equipment. All persons involved with the equipment or systems should be instructed how to operate in a safe manner.

**WARNINGS:**

**⚠ All electrical work must be done by a qualified electrician according to local, state and national codes.**

**⚠ CAUTION: Installation can cause exposure to live components. Disconnect electrical power before proceeding with installation. Proper Lock Out / Tag Out procedures should be used.**

**Improper installation or operation of this equipment can cause damage to equipment and / or injury to personnel. The installation/operation manual must be read and followed in its entirety.**

**SPECIFICATIONS XA34:**

Input Voltage:	230/460 VAC 3-Phase
Motor:	3 HP TEFC
Max Current:	8.4/4.2 Amps
Filter Area:	200-348 square feet (media dependent)
Load Capacity:	1,000 pounds
Air Flow:	3,720 CFM
Capture Velocity:	250 FPM average @ 1" above work surface.
Noise level:	79 dBA at operator 74 dBA at operator with silencer
Overall Dimensions:	Base table: 36H x 58W x 37D With shields: 73H x 58W x 37D

**COMPRESSED AIR REQUIREMENTS:**

3/4" Air line with clean, dry compressed air regulated to 80-90 psi max is required for proper operation of the Roto-Pulse filter cleaning system. It is recommended that a pressure regulator and coalescing filter be installed between the compressed air source and the inlet to the down draft table.

**EQUIPMENT/TOOLS REQUIRED:**

- Standard wrenches
- Forklift
- Pipe wrench
- Cordless drill

**INSTALLATION:**

1. Inspect the Unit for any visible damage that may have occurred during shipment. Note any damage on the packing slip.
2. Uncrate the unit. Use caution not to damage the paint while dismantling the crate.
3. Remove any options ordered from the skid.
4. Using a forklift, lift the unit off of the skid. Carefully place the downdraft table into its location.
5. Connect compressed air supply to the 3/4" NPT nipple on the unit.
6. Connect the wire whip to the appropriate plug based on unit and voltage ordered. Plug into properly sized electrical outlet.
7. Mount any optional accessories per instructions if ordered.

**OPERATION:**

- To start the unit, toggle the switch located on the front of the unit to the ON position. To stop the unit, toggle the switch to the OFF position.
- If equipped: To turn the light on toggle the switch located on the front of the unit to the ON position. To turn the light off, toggle the switch to the OFF position.
- To clean filters depress and hold down the pulse push-button for 2 seconds at least once per hour, and once after shutdown.
- Units equipped with auto-pulse do not require manual activation of the pulse system while the unit is running. The filters will clean automatically for 2 seconds, every 45 seconds that the unit is running. It is recommended that at least one manual pulse is completed after the unit is turned off.

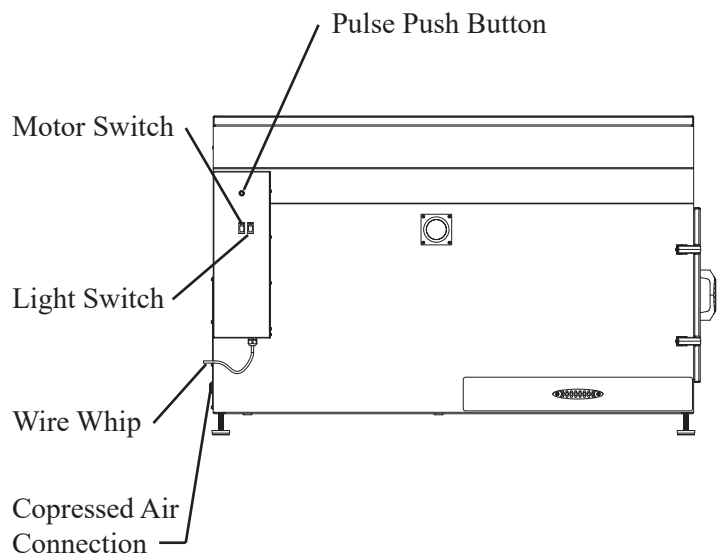
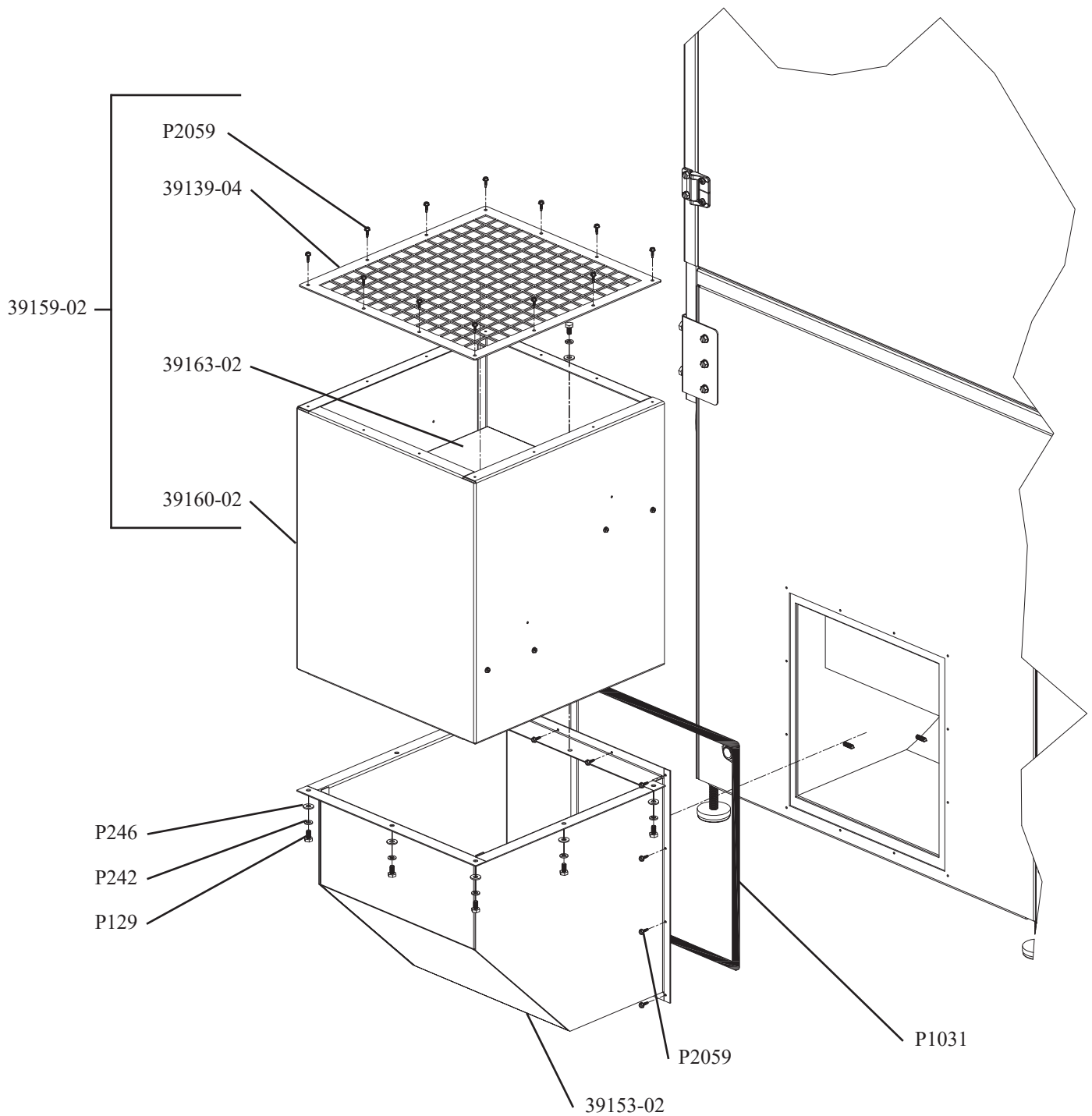


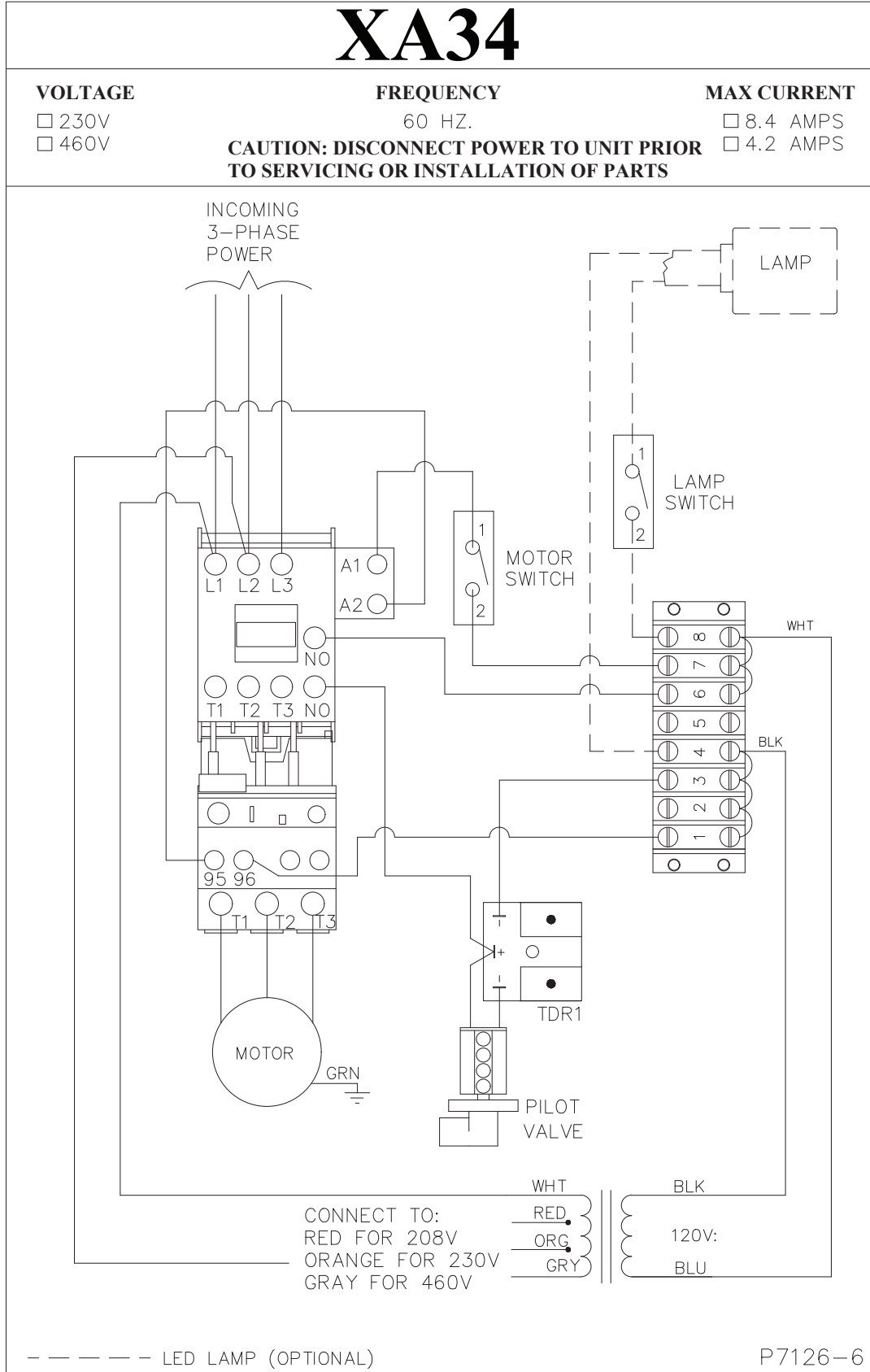
FIG 1.

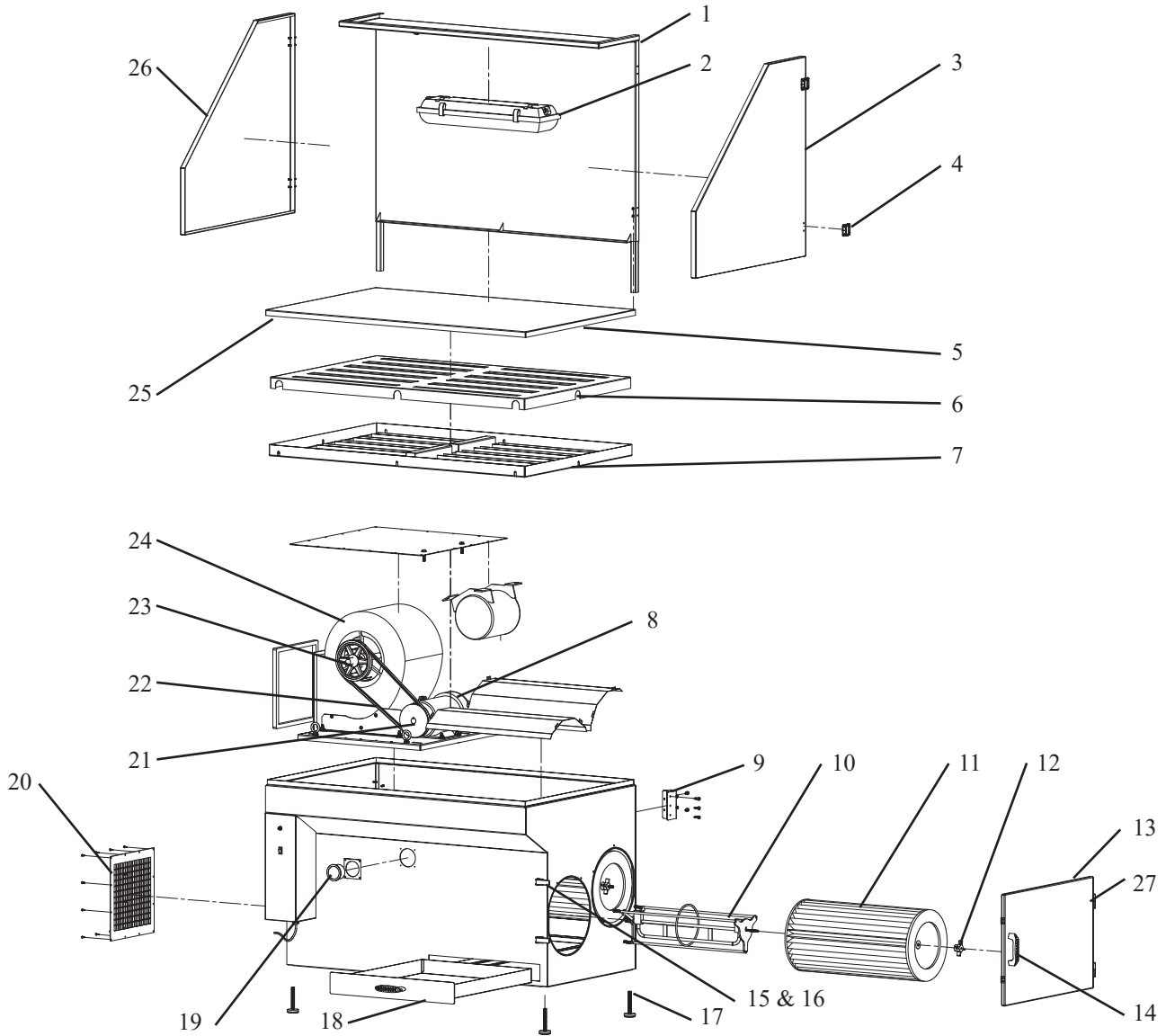
## OPTIONAL SILENCER ASSEMBLY INSTRUCTIONS

1. Remove all items from packaging.
2. Apply foam (P1031) to the transition as shown.
3. Using supplied sheet metal screws (P2059) align and attach transition to pre-drilled holes in the unit.
4. Using supplied bolts (P129) and associated hardware (P242, P246) bolt the silencer filter to the transition.

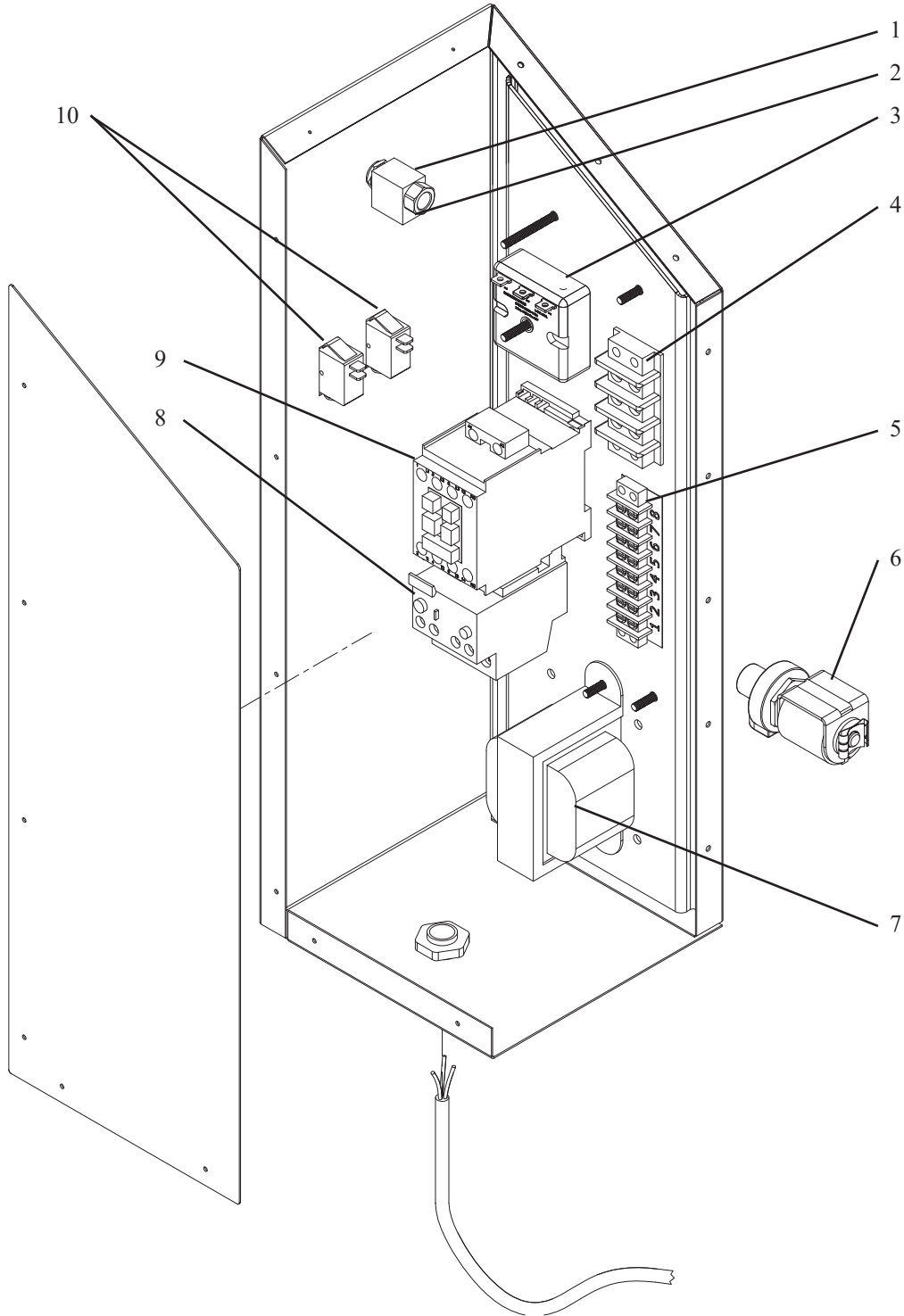


**XA34 MAX WIRING DIAGRAM**





Item	Part No.	Description	Item	Part No.	Description
1.	39130-02	Back & Top Shield	13.	39135-01	Access Door
2.	P7170	2' Dust Proof LED Light Fixture	14.	P7108	Handle
3.	39133-04	Side Shield - Right	15.	P7106	Under Center Latch
4.	P7105	Hinge	16.	P7107	Latch Catch
5.	39108-02	Perforated Table Top	17.	P7102	Leveling Leg
	P7134	Rubber Work Mat		P2334	3" Swivel Caster
6.	39127-02	Top Baffle	18.	39120-02	Dust Drawer Assembly
7.	39124-01	Bottom Baffle	19.	P2221	0-5" Mini-Helic gauge
8.	P3495	3HP TEFC Motor	20.	39139-02	Exhaust Grille
N/S	30251-01	30251-01 Motor Mount Bracket	21.	P3578	Motor Pulley
9.	39110-01	Shield Bracket	22.	P3549	Drive Belt
10.	36720-10	Roto-Pulse Assembly	23.	P1711	Blower Pulley
11.	P7401RM	80/20 Cartridge Filter	24.	P3498	Blower
	P7408RM	100% Spunbond Cartridge Filter	25.	P1719	Edge Guard
	P7416NM	Nano-Max Cartridge Filter	26.	39133-03	Side Shield - Left
	P7409RM	PTFE Cartridge Filter	27.	P7109	Lift Off Hinge
12.	P3649	4-Prong Knob	N/S	P2075	Diaphragm Valve



Item	Part No.	Description	Item	Part No.	Description
1.	P2766	Push Button Air Valve	6.	P3118	Pilot Valve
2.	P3735	1/4" Elbow Preslock Fitting	7.	P1754	Transformer
3.	P2922	Auto-Pulse Timer	8.	P3915	Overload
4.	P445	3 Conn. Terminal Block	9.	P3910	Motor Contactor
5.	P3246	8 Conn. Terminal Block	8.	P2219	On / Off Switch

