



BREATHE EASY...Solutions for Clean, Safe Air

MICRO AIR RP8-2 DUST COLLECTOR

Specifications and Technical Data

TYPICAL APPLICATIONS:

- WELD SMOKE AND FUMES
- GRINDING / POLISHING DUST
- COMPOSITES DUSTS
- ABRASIVE BLAST DUSTS
- SMOKE/ FUMES FROM LASER/PLASMA CUTTING
- PHARMACEUTICAL / FOOD PROCESSES



HOW IT WORKS:

STANDARD FEATURES:

- REVOLUTIONARY ROTO-PULSE® FILTER CLEANING SYSTEMS
- TOP MOUNT OR REMOTE MOUNT FANS
- LARGE CAPACITY DUST DRAWER OR HOPPER
- HEAVY DUTY 12 GA. CONSTRUCTION
- RATED FOR INDOOR AND/OR OUTDOOR INSTALLATION
- AFTER-PULSE CLEANING CYCLE STANDARD
- FULL RANGE OF OPTIONS
- BEST INDUSTRY WARRANTY

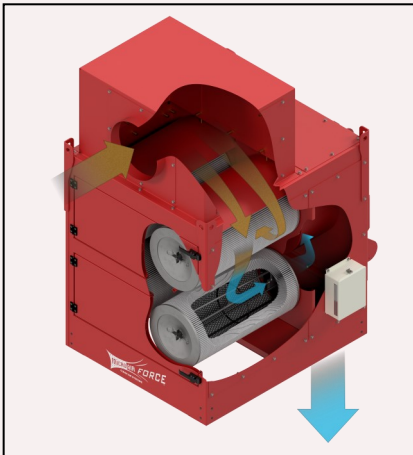
OPTIONS:

- HOPPER SETUP WITH LONG LEGS AND BARREL LID KIT. OR LOW PROFILE UNIT WITH DUST DRAWERS
- INLET PLENUM

OPTIONS (CONT.):

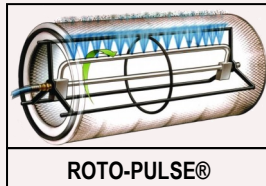
- SILENCER.
- HEPA AFTERFILTER.
- VARIETY OF CARTRIDGE FILTER OPTIONS.
- 10, 15, 20 OR 30 HP TOP MOUNT / REMOTE MOUNT FANS—OTHER OPTIONS AVAILABLE
- MAGNAHELIC OR PHOTOHELIC GAUGES.
- FULL ELECTRICAL CONTROL PACKAGE
- DROP-OUT MODULES FOR HEAVY PARTICULATE
- INTELLI-TOUCH® ENERGY SAVING CONTROLS
- EXPLOSION VENTS, BACKBLAST DAMPERS, OSHA/NFPA COMBUSTIBLE DUST COMPLIANCE PACKAGE
- SPARK ARRESTORS
- PAINT OPTIONS: BAKED ENAMEL OR EPOXY COAT INSIDE & OUT

Contaminated air is pulled into the inlet plenum at the top of the RP8-2 Cabinet, then travels down through the cartridge



filter section, where the contaminant is filtered and dropped into the hopper or dust drawer. Breathe Easy, clean safe air is exhausted out the bottom of the unit. Cartridge cleaning is accomplished with Micro Air's proprietary Roto-Pulse® cleaning system, where air is pulsed

into a specially designed stainless steel, rotating tube, engineered with pre-drilled holes. As the air enters this tube, the force of the pulse causes the tube to rotate incrementally inside the cartridge. While rotating, air



ROTO-PULSE®

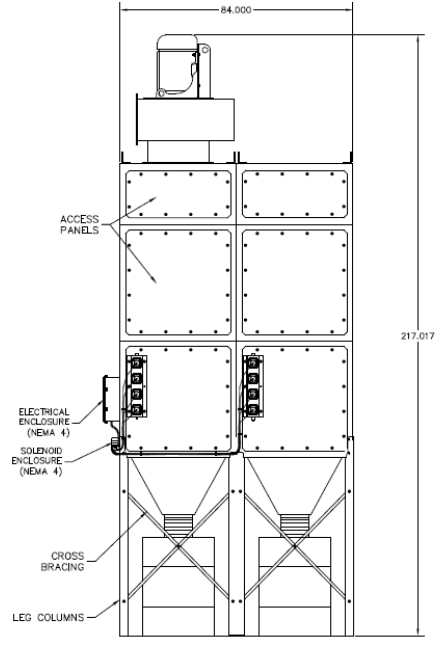
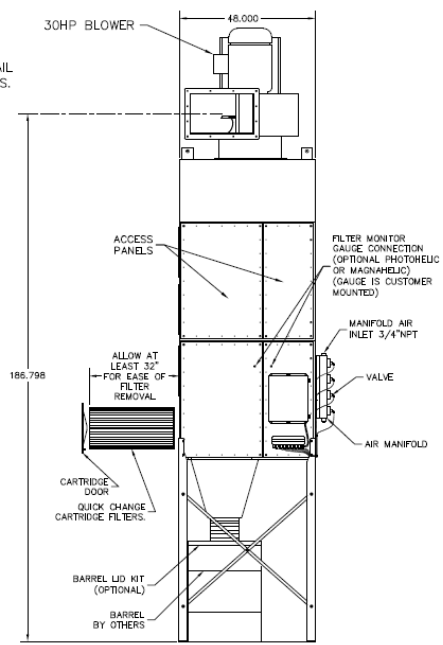
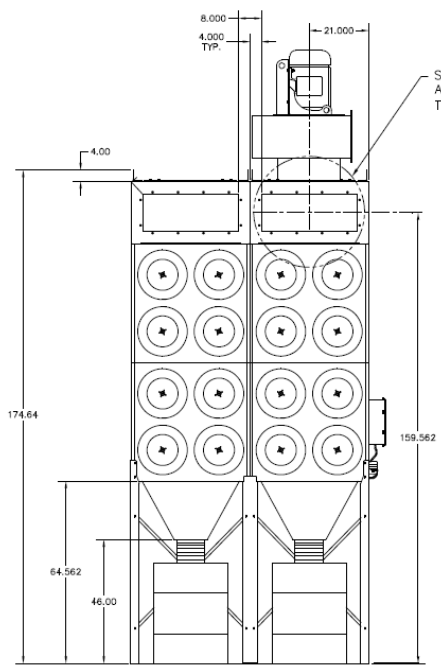
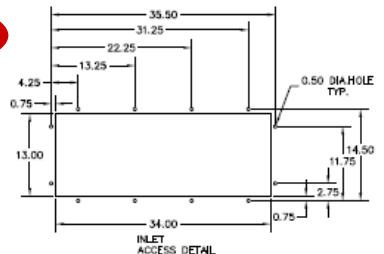
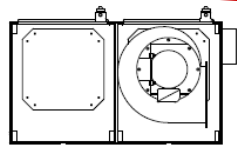


RP8-2 with Ducted to Multiple Weld Cells in Aluminum Mailbox Manufacturing Facility

exits the pre-drilled holes, resulting in air dispersment over the entire surface of the cartridge, providing for an improved cartridge cleaning cycle, compared to competitive backflush cleaning systems .



RP8-2



RP8-2 EQUIPPED WITH 30 HP TOP MOUNT FAN / LONG LEGS/HOPPER / INLET PLENUM

RP8-2 SPECIFICATIONS:

<p>OVERALL DIMENSIONS: 175" H X 84" W X 49" D WITH LONG LEGS/HOPPER & INLET PLENUM 126" H X 84" W X 49" D WITH SHORT LEGS/DUST TRAY & INLET PLENUM</p> <p>WEIGHT: *3,098 LBS ACTUAL WEIGHT *3,323 LBS SHIPPING WEIGHT *WEIGHT VARIES DEPENDING ON OPTIONS SELECTED</p> <p>CABINET: HEAVY DUTY 14 GAUGE GALVANEAL STEEL WITH EXTERIOR SURFACES GROUND SMOOTH</p> <p>FINISH: INDUSTRIAL GRADE CRIMSON RED, TEXTURED BAKED ENAMEL PAINT IN SIDE AND OUT. OPTIONAL EPOXY COAT INSIDE & OUT AVAILABLE</p> <p>FILTER ACCESS: EASY FRONT ACCESS THROUGH HINGED / LATCHED DOORS</p> <p>FAN-MOTOR/BLOWER VARIOUS SIZES AVAILABLE IN TOP MOUNT OR REMOTE MOUNT CONFIGURATION, SIZED PER APPLICATION SPECIFICATIONS (10,15, 20, OR 30 HP TOP MOUNT / REMOTE MOUNT FANS AVAILABLE AS STD. OPTION) OTHER CUSTOM OPTIONS AVAILABLE</p> <p>AIR VOLUME: DEPENDENT UPON OPTIONS SELECTED—CONSULT FAN CURVES FOR SPECIFICS</p> <p>FILTER CHANGE INDICATOR: MAGNEHELIC GAUGE OR PHOTOHELIC GAUGE</p> <p>FILTRATION: SIXTEEN EA. HIGH EFFICIENCY, 80/20 BLEND, FIRE-RETARDANT CARTRIDGE FILTERS, 250 SF MEDIA PER FILTER, 4,000 SF TOTAL MEDIA *MULTIPLE CARTRIDGE MEDIA OPTIONS AVAILABLE</p>	<p>CONTROLS: SOLID STATE TIMER BOARD, FACTORY WIRED AND INSTALLED—FULL CONTROL PACKAGE AVAILABLE AS AN OPTION</p> <p>INLET / EXHAUST: TOP MOUNT OR REMOTE MOUNT INLET PLENUM EXHAUST - OUT BOTTOM OF UNIT</p> <p>MAX CURRENT 10 HP, 230/460V—24.6 / 12.3 AMP 15HP, 230/460V— 35.0 / 17.5 AMP 20 HP, 230/460V—47.0 / 23.5 AMP 30 HP, 230/460V—69.0 / 34.5 AMP</p> <p>NOISE LEVELS: DEPENDENT UPON OPTIONS SELECTED—CONSULT FACTORY</p> <p>WIND LOAD RATING: 100 MPH</p> <p>CABINET PRESSURE RATING: +/- 20 INCHES WC</p> <p>COLLECTION OPTIONS: HOPPERS WITH 10" DIA COLLAR OR DUST TRAYS</p> <p>COMPRESSED AIR: REQUIRES 80—90 PSI CLEAN, DRY AIR & MINIMUM 3/4" AIR LINE</p> <p>CARTRIDGE CLEANING SYSTEM: ROTO-PULSE® INCREMENTAL ROTATING TUBE WITH PRE-DRILLED HOLES. AS AIR IS PULSED INTO THE TUBE, IT ROTATES AND AIR EXITS THE PRE-DRILLED HOLES, PROVIDING A HIGHLY EFFICIENT AND TOTAL CLEANING OF THE CARTRIDGE FILTER</p> <p>OFF-LINE CARTRIDGE CLEANING: STANDARD EQUIPMENT DESIGNED TO CLEAN FILTERS AFTER UNIT IS TURNED OFF FOR OPTIMAL OFF-LINE CARTRIDGE CLEANING. TIMER CAN BE ADJUSTED BETWEEN 0 AND 17 MINUTES</p>
---	---

SPECIFICATIONS SUBJECT TO CHANGE WITHOUT NOTICE