



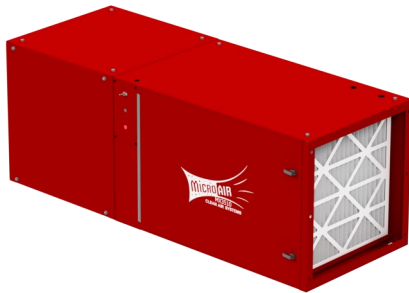
**BREATHE EASY...Solutions for Clean, Safe Air**

# MX3510

## Specifications and Technical Data

### TYPICAL APPLICATIONS:

- AMBIENT DUST OR MIST CAPTURE
- SOURCE CAPTURE PROCESS DUSTS & MISTS
- WELDING SMOKE & FUMES
- GRINDING / SANDING / POLISHING
- METALWORKING / COMPOSITES
- OTHER NUISANCE DUSTS GENERATED IN INDUSTRIAL PROCESSES



### HOW IT WORKS:

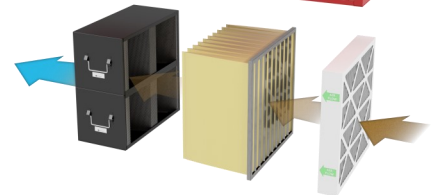
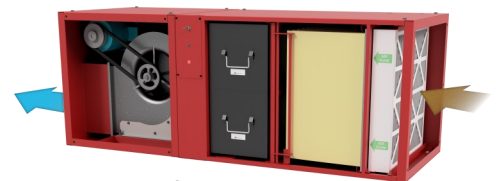
Polluted air flows through a pleated or foam prefilter, effectively removing the larger particles of the pollutant. Next the air passes through the main filtration system. This portion contains the primary filter media, a bag filter, HEPA filter, Carbon module or a combination. This system captures minute particles of airborne impurities and absorbs gases and odors. The discharged air is then pollution-free.

### STANDARD FEATURES:

- 2,000—3,500 CFM - DEPENDING ON OPTIONS SELECTED—CONSULT FAN CURVES
- BELT DRIVEN—BLOWER
- SIDE LOAD. EASY FILTER ACCESS
- FILTER CHANGE LIGHT OR MAGNAHELIC GAUGE
- CAM-LOCK POSITIVE FILTER SEALING
- FULL RANGE OF OPTIONS

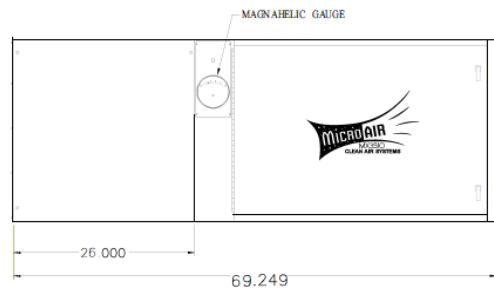
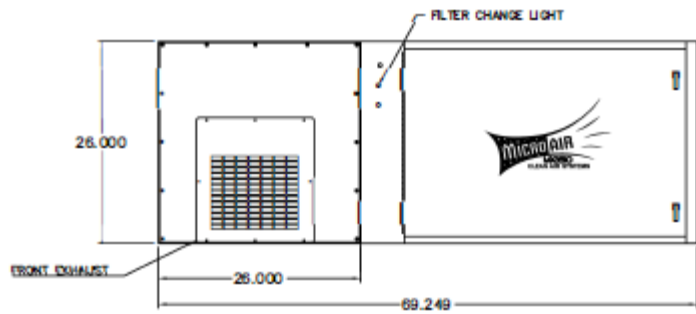
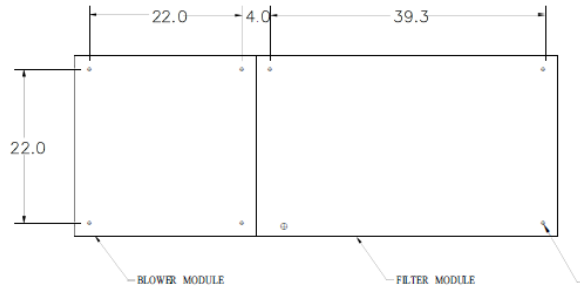
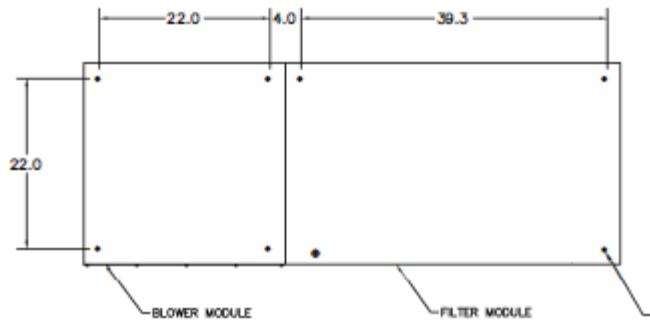
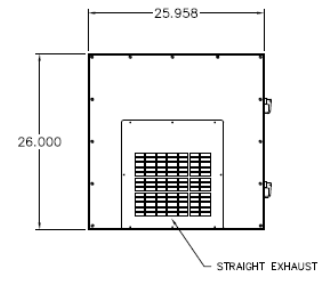
### OPTIONS:

- 1-1/2 OR 3 HP MOTOR OPTIONS
- WRAP-AROUND PREFILTER MODULE
- 99.97% DOP HEPA FILTER
- 24" x 24" x 12" REFILLABLE MODULES— WITH UP TO 80 LBS OF CARBON
- MULTIPLE PRE-FILTER OPTIONS
- MULTIPLE FILTER OPTIONS
- OIL IMPINGER / OIL DRAIN KIT FOR MIST COLLECTION
- MULTIPLE MOUNTING OPTIONS AVAILABLE
- PULLEY OPTIONS FOR LOW,/MED./HIGH STATIC APPLICATIONS
- SOURCE CAPTURE MODULE WITH ONE, TWO OR THREE INLETS
- MOTOR CONTROLS FOR 3-PHASE OPERATION
- EXHAUST OPTIONS— STRAIGHT/FRONT/REAR
- SILENCER FOR STRAIGHT EXHAUST





# MX3510



**Side (Front) Exhaust**

**Straight Through Exhaust**

## MX3510 SPECIFICATIONS:

**OVERALL DIMENSIONS:**

26" H X 26" W X 69.5" L NO SILENCER  
 26" H X 26" W X 93.5" L W / SILENCER

**WEIGHT:**

\*268LBS ACTUAL WEIGHT  
 \*300 LBS SHIPPING WEIGHT  
 \*WEIGHT VARIES DEPENDING UPON OPTIONS SELECTED

**CABINET:**

HEAVY DUTY 16 GA. WELDED GALVANEAL STEEL  
 W/EXTERIOR SURFACES GROUND SMOOTH

**FINISH:**

INDUSTRIAL GRADE TEXTURED BAKED  
 CRIMSON RED ENAMEL PAINT—INSIDE AND OUT

**FILTRATION OPTIONS:**

ONE EA. MERV 15, 24" X 24" X 32" 95% BAG FILTERS  
 ONE EA. MERV 15, 24" X 24" X 32" 55% BAG FILTER  
 ONE EA MERV 15, 24" X 24" X 15" 55% BAG FILTER  
 ONE EA MERV 15, 24" X 24" X 15" 95% BAG FILTER  
 REFILLABLE MODULE W/ CARBON (UP TO 80 LBS CARBON)  
 95% OR 99.97% DOP HEPA

**PREFILTER**

2" PLEATED PRE-FILTER  
 2" ALUMINUM MESH PRE-FILTER  
 2" BAFFLE IMPINGER  
 4" PLEATED PRE-FILTER  
 WRAP-AROUND DUO-CUBE PREFILTER

**FILTER ACCESS:**

FRONT LOAD FOR EASY ACCESS

**FILTER ACCESS:**

FRONT LOAD FOR EASY ACCESS

**NOISE LEVEL:**

79 dBA @ 6' FROM EXHAUST

**INLET / EXHAUST:**

STRAIGHT EXHAUST—INTAKE AT END / EXHAUST AT OPPOSITE  
 END THROUGH 4 WAY ADJUSTABLE GRILLE  
 SIDE EXHAUST—INTAKE AT END / EXHAUST EITHER FRONT OR  
 REAR

**MOTOR:**

1-1/2 HP, 120V, 60 HZ, 1-PHASE, TEFC MOTOR  
 3 HP, 230/460 V, 60 HZ, 3-PHASE, TEFC MOTOR

**BLOWER:**

12-9 BELT DRIVEN

**INPUT VOLTAGE:**

1-1/2 HP — 120V, 60 HZ, 1-PHASE  
 3 HP — 230/460V, 60 HZ, 3-PHASE

**MAX CURRENT:**

1-1/2 HP, 120V — 16 AMPS  
 3 HP, 230V/460V — 8.4 / 4.2 AMPS

**AIR FLOW:**

UP TO 3,500 CFM—DEPENDENT ON OPTION CHOICES

**FILTER CHANGE INDICATOR (OPTIONAL):**

FILTER CHANGE LIGHT