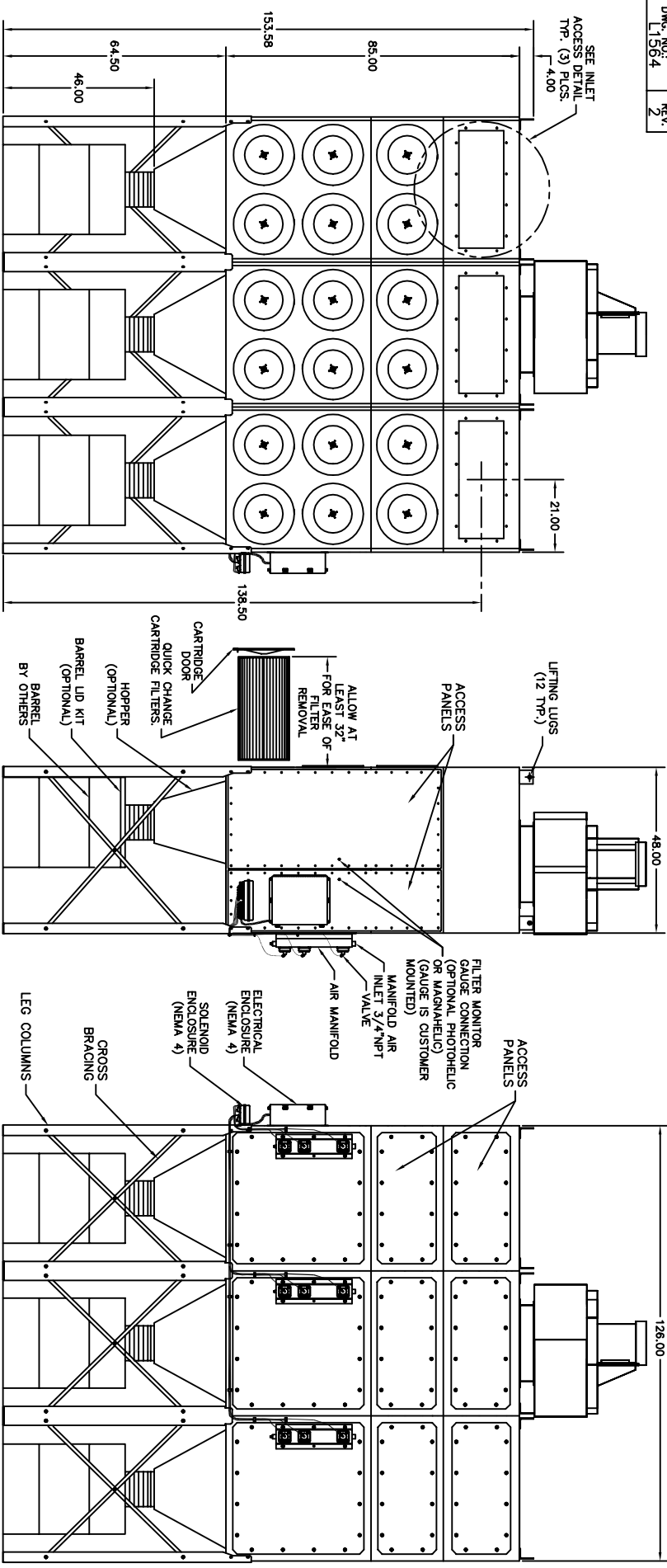


- NOTES
- 1.) CONSULT MANUFACTURER REPRESENTATIVE FOR MOTOR BLOWER HEIGHT AND OTHER SPECIFICATIONS.
 - 2.) UNITS MUST BE ATTACHED TO IN-PLANT COMPRESSED AIR SUPPLY FOR CLEANING MECHANISM TO FUNCTION (90 MAX PSIG CLEAN DRY AIR)
 - 3.) VALVES AND CONTROL TIMER SYSTEM OPERATE ON 120V, 50-Hz. POWER.
 - 4.) WELDED STEEL CONSTRUCTION OF 12 GA. MILD STEEL ENCLASURE
 - 5.) SOLID STATE PULSE CONTROL TIMER IN NEMA 4 ENCLOSURE
 - 6.) PAINTED INSIDE & OUT CRIMSON RED.

SPECIFICATIONS
TOTAL VALVES 6
TOTAL CARTRIDGES 12
COMPRESSED AIR 1.0 SCF @90 psi per sec.

TITLE		TOLERANCES UNLESS OTHERWISE NOTED	
RP6-2 BOLT TOGETHER WITH BLOWER DETAIL		3 DEC. PLACES	1/16"
DWG. NO. L1564		SCALE	1/32"=1"
DATE	12-17-97	CHG. BY	MC
APP'D		CHKD BY	MC
		DATE	11
		SH. 1 OF 4	
DWG. NO. L1564		METAL FAB	



- NOTES
- 1.) CONSULT MANUFACTURER REPRESENTATIVE FOR MOTOR BLOWER HEIGHT AND OTHER SPECIFICATIONS.
 - 2.) UNITS MUST BE ATTACHED TO IN-PLANT COMPRESSED AIR SUPPLY FOR CLEANING MECHANISM TO FUNCTION (90 psig CLEAN DRY AIR)
 - 3.) VALVES AND CONTROL TIMER SYSTEM OPERATE ON 120V, 50-HZ. POWER.
 - 4.) WELDED STEEL CONSTRUCTION OF 12 GA. MILD STEEL.
 - 5.) SOLID STATE PULSE CONTROL TIMER IN NEMA 4 ENCLOSURE.
 - 6.) PAINTED INSIDE & OUT CRIMSON RED.

SPECIFICATIONS

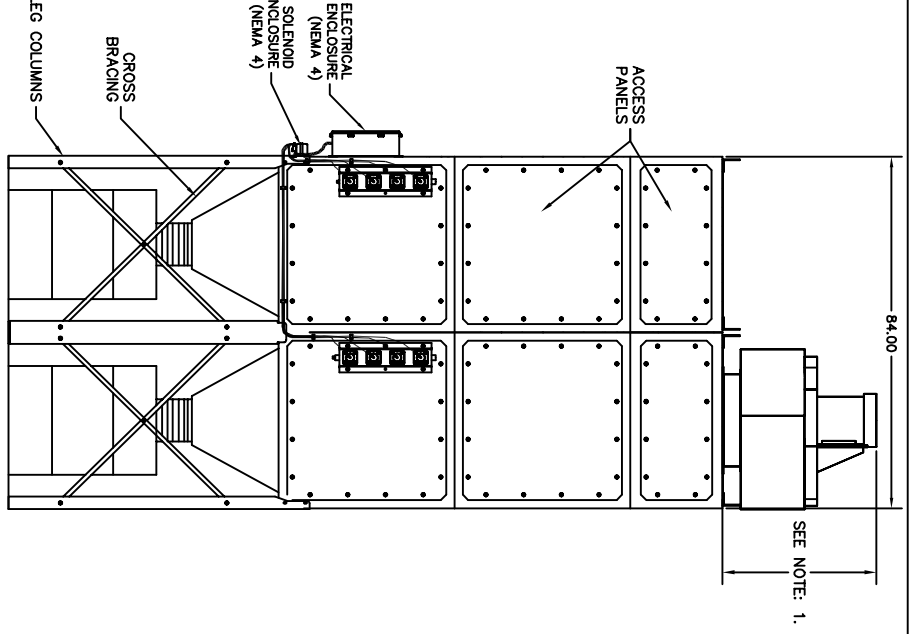
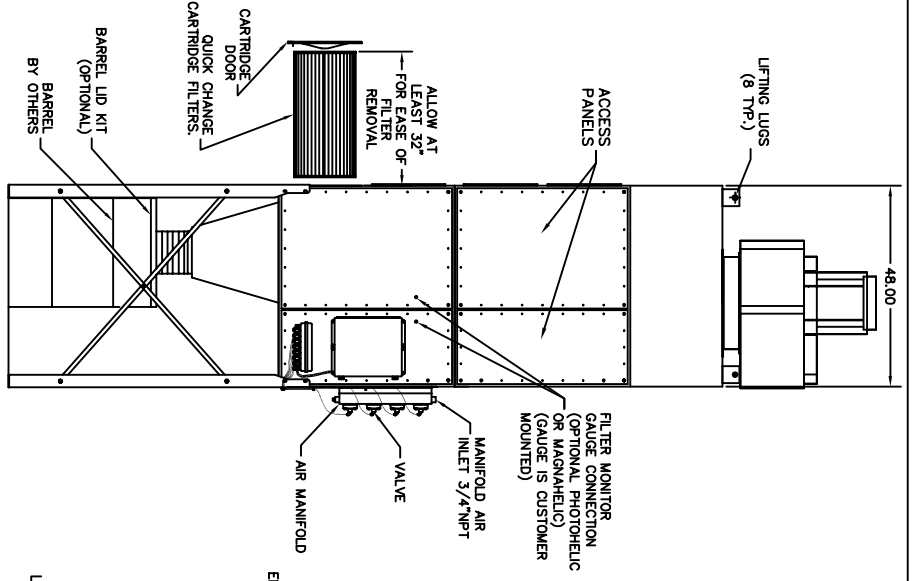
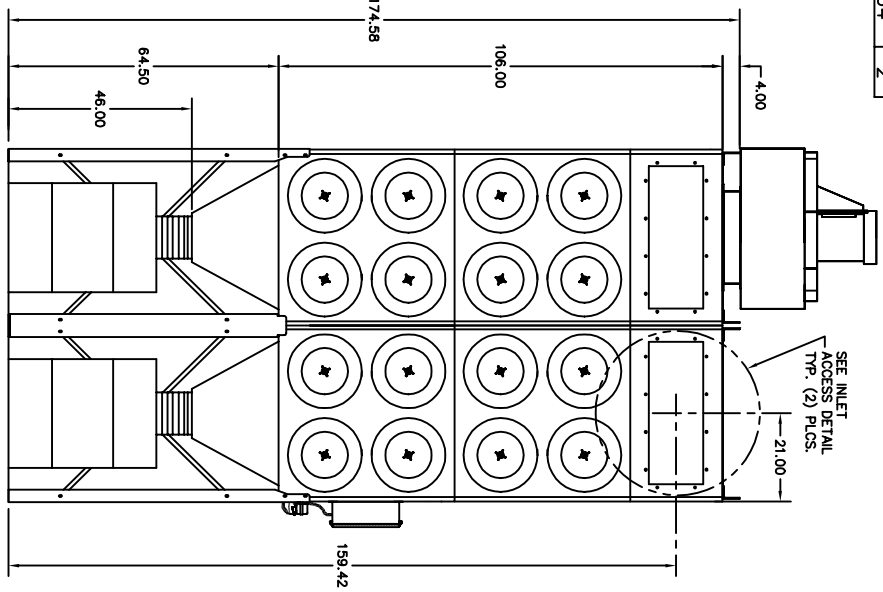
TOTAL VALVES 9

TOTAL CARTRIDGES 18

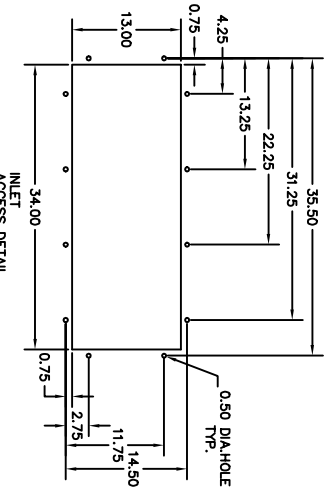
COMPRESSED AIR 1.0 SCF @90 psi per sec.

TITLE		TOLERANCES UNLESS	
RP6-3 BOLT TOGETHER WITH BLOWER DETAIL		3 DEC. PLACES	
DWG. BY: M.C.		SCALE: 1/2" = 1'-0"	
DATE: 12-17-97		DATE: 11-17-97	
CHKD BY: J.D.		DATE: 11-17-97	
SH. 2 OF 4		DWG. NO.: 1564	

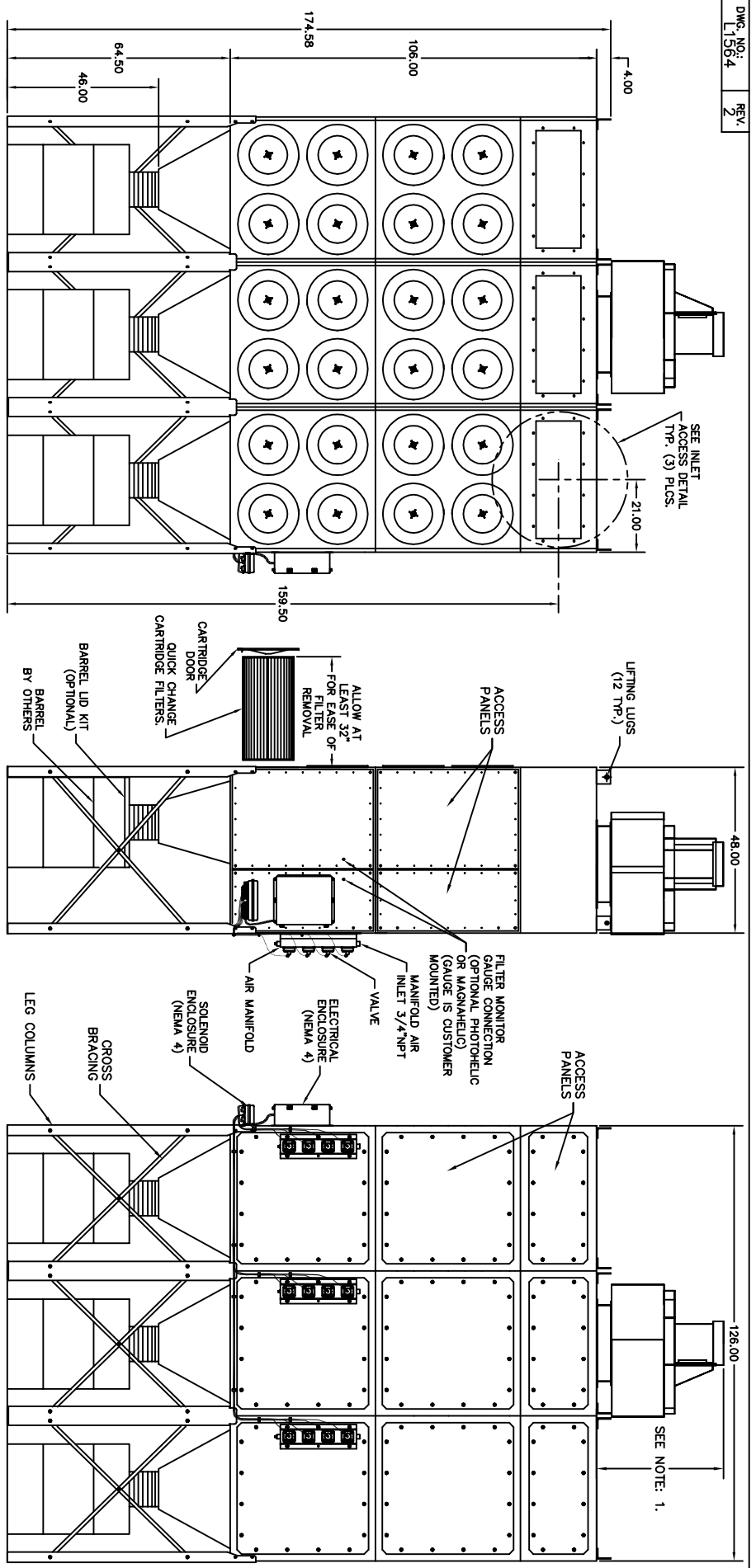




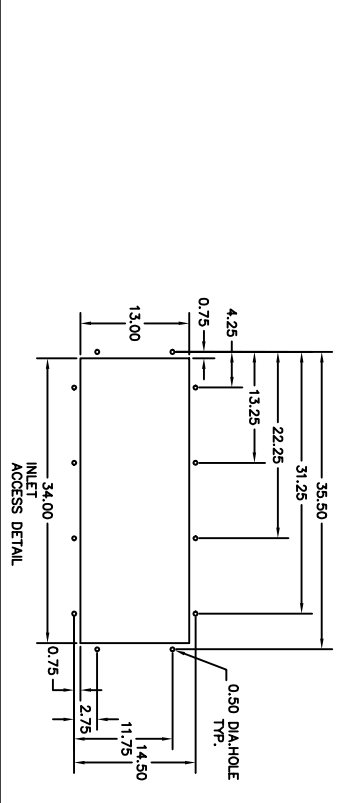
- NOTES**
- 1.) CONSULT MANUFACTURER REPRESENTATIVE FOR MOTOR BLOWER HEIGHT AND OTHER SPECIFICATIONS.
 - 2.) UNITS MUST BE ATTACHED TO IN-PLANT COMPRESSED AIR SUPPLY FOR CLEANING MECHANISM TO FUNCTION (90 MAX PSIG CLEAN DRY AIR)
 - 3.) VALVES AND CONTROL TIMER SYSTEM OPERATE ON 120V, 50-HZ, POWER.
 - 4.) WELDED STEEL CONSTRUCTION OF 12 GA. MILD STEEL.
 - 5.) SOLID STATE PULSE CONTROL TIMER IN NEMA 4 ENCLOSURE.
 - 6.) PAINTED INSIDE & OUT CRIMSON RED.
- SPECIFICATIONS**
- TOTAL VALVES: 8
 TOTAL CARTRIDGES: 16
 COMPRESSED AIR: 1.0 SCF @90 PSI PER SEC.



<p>TITLE RP8-2 BOLT TOGETHER WITH BLOWER DETAIL</p>		<p>TOLERANCES UNLESS 3 DEC. PLACES FIN. DIMS. ±.005 UNFIN. DIMS. ±.015</p>		<p>SCALE 1:1</p>		<p>DATE 12-17-97</p>		<p>BY JG</p>		<p>CHKD BY DM</p>		<p>NO. 11</p>		<p>SH. 3 OF 4</p>		<p>DMC NO. 1564</p>		<p>REV. 2</p>	
<p>METAL FAB METAL FABRICATION, INC. 1000 W. 10TH ST. WICHITA, KS 67201</p>																			



- NOTES**
- 1.) CONSULT MANUFACTURER REPRESENTATIVE FOR MOTOR BLOWER HEIGHT AND OTHER SPECIFICATIONS.
 - 2.) UNITS MUST BE ATTACHED TO IN-PLANT COMPRESSED AIR SUPPLY FOR CLEANING MECHANISM TO FUNCTION (90 MAX PSIG CLEAN DRY AIR)
 - 3.) VALVES AND CONTROL TIMER SYSTEM OPERATE ON 120V, 50-HZ POWER.
 - 4.) WELDED STEEL CONSTRUCTION OF 12 GA. MILD STEEL.
 - 5.) SOLID STATE PULSE CONTROL TIMER IN NEMA 4 ENCLOSURE.
 - 6.) PAINTED INSIDE & OUT CRIMSON RED.
- SPECIFICATIONS**
- TOTAL VALVES 12
 TOTAL CARTRIDGES 24
 COMPRESSED AIR 1.0 SCF @90 psi per sec.



<p>TITLE</p> <p>RP8-3 BOLT TOGETHER WITH BLOWER DETAIL</p>		<p>TOLERANCES UNLESS SHOWN OTHERWISE</p> <p>3 DEC. PLACES 1/16" ±.001</p> <p>SCALE 1/3"=1"</p>	
<p>DMC NO: 1564</p> <p>REV: 2</p>	<p>DATE: 12-17-97</p> <p>BY: JLD</p> <p>CHECKED BY: JLD</p>	<p>SH. 4 OF 4</p>	<p>DMC NO: 1564</p> <p>REV: 2</p>